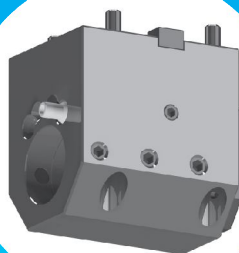
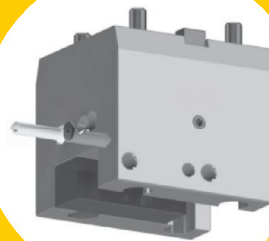
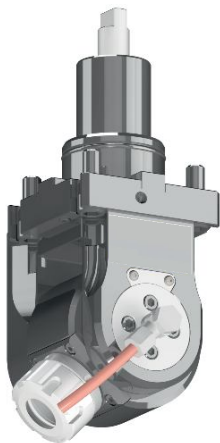
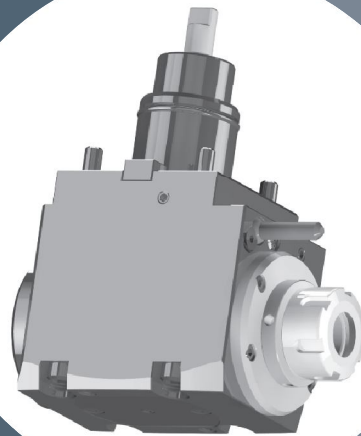
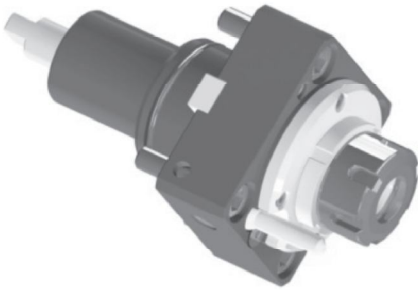


# EuroDrive

Made In Europe

## Live Tools Product Catalogue





**EuroDrive** provides its customers high quality Driven Tools and Static Tools for CNC lathes and Machining Centres. We offer a complete range of Driven Tool Holders for all major machines including Haas, Doosan, Okuma, Mazak, Mori Seiki, Jyoti, BFW and LMW.

**EuroDrive** delivers products that meet the highest standards of Performance, Quality and Service. All our products are manufactured in Europe in a modern and state of the art production facility to the highest quality standards of ISO 9001.

**EuroDrive** develops and produces products to meet our customers high technical requirements and specifications. Our team of highly trained & skilled technicians and application engineers collaborate with our customers to develop unique solutions.

**EuroDrive** produces Tool Holders for CNC lathes with axial, radial and adjustable style for BMT, VDI and BOT Turrets. Static Tools are offered for Turning, Boring, Face Grooving, Cut Off and Bar Pulling operations.

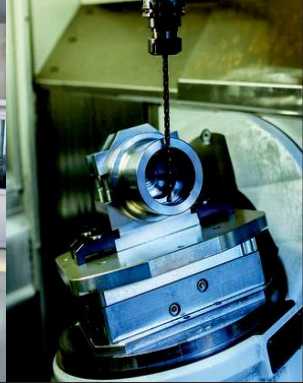
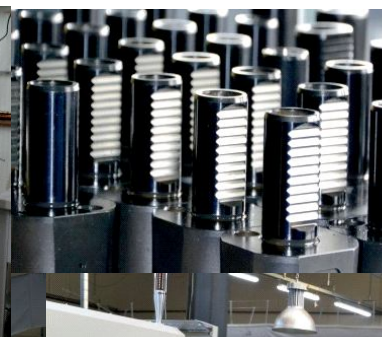
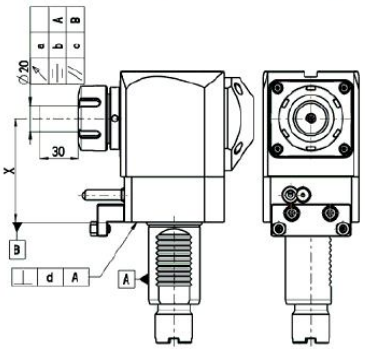
**EuroDrive** heads can be serviced or sent in for periodic maintenance to any one of our Authorized Service Centres located in the markets we serve.



Management System  
ISO 9001:2015



	PART NAME :	RGT140251321180UD	April 17, 2019	12:13
	REV NUMBER :	SER NUMBER :	9002	STATS COUNT : 1



# CONTENTS



## Specifications

Ordering System	2
Tool Orientation	8

## BMT Turret Tools

BMT 45 Live	12
BMT 45 Static	14
BMT 55 Live	16
BMT Static	19
BMT 65 Live	21
BMT 65 Static	24
HASS BOT Static	26
BMT 44 Nakamura	31
BMT 55 Nakamura	36
BMT 65 Nakamura	41
BMT 60 OKUMA	45
BMT 60 Mori Seiki	51

## VDI Turret Tools

Sauter DIN 5482	56
Sauter DIN 5480	59
Diplomatic DIN 1809	63
Baruffaldi / TOEM	67
HAAS Turret	71
OKUMA	76
VDI Static DIN 69880	79

## Accessories

85


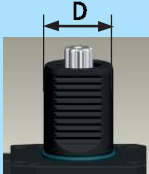















## Operating instructions

86




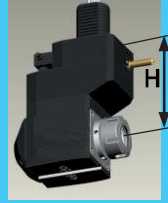


## Maintenance Data Sheet

90

# LIVE TOOLHOLDER SYMBOLIZATION

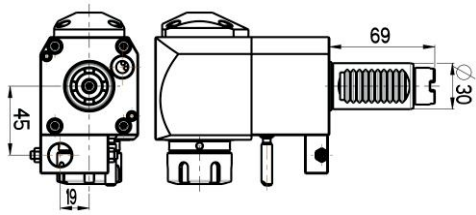
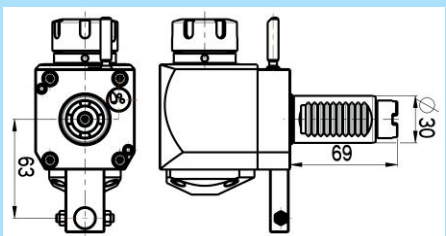
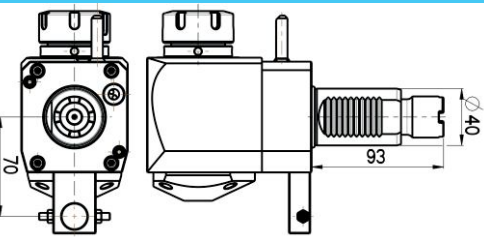
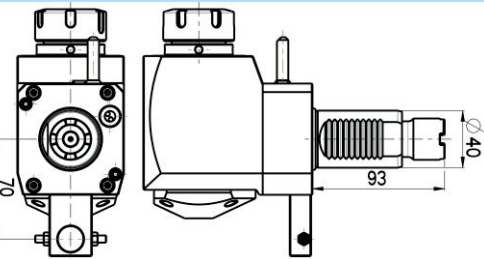
EDL	TURRET DATA		PRODUCT TYPE	COUPLING TYPE	TOOL GRIP	
	TYPE	D(mm)			TYPE	DIMENSION
EDL	<b>1</b>	<b>40</b>	<b>2</b>	<b>5</b>	<b>1</b>	<b>32</b>
	<b>1 - VDI</b> 		<b>1 - STRAIGHT</b>  <b>2 - ANGULAR</b> 	<b>1 - DIN 5482</b>  <b>2 - DIN 1809</b> 	<b>1 - COLLET</b> 	SIZE COLLET 16/25/ <b>32</b> /40
	<b>2 - BMT</b> 		<b>3 - OFFSET STRAIGHT</b>  <b>4 - OFFSET ANGULAR</b>  <b>5 - VARIABLE ANGLE</b> 	<b>3 - DIN 5480</b>  <b>4 - TOEM</b>  <b>5 - STEPPED</b> 	<b>2 - WELDON</b> 	WELDON upon request
					<b>3 - SHELL MILL ARBOR</b> 	SHELL MILL ARBOR upon request

Example: EDL1- 40/251-32/2.2-80A

INTERNAL COOLING	ONLY FOR ANGULAR OFFSET STRAIGHT OFFSET ANGULAR		DETAILS CODE
	DIRECTION	H (mm)	
<b>2</b>	<b>2</b>	<b>80</b>	<b>A</b>
<b>1 - NO</b> <b>2 - YES</b> (max 20 bar)	<b>1 - RIGHT</b> 	  	See details code table  Please check the pages no. 3-4
	<b>2 - LEFT</b> 		
	<b>3 - RIGHT&amp;LEFT</b> 		

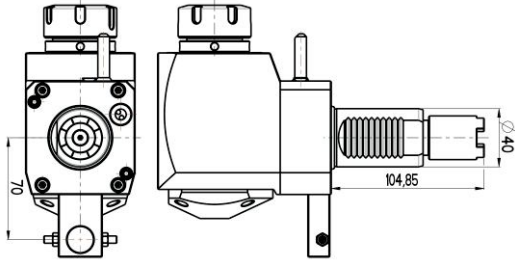
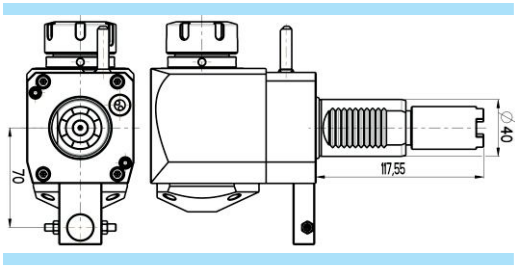
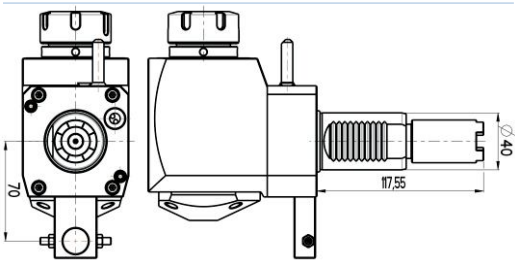
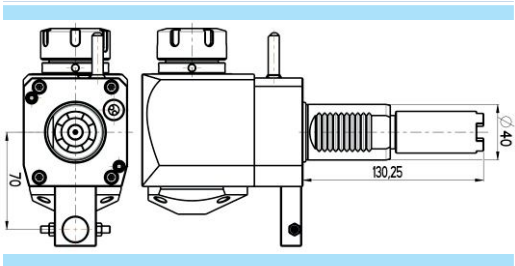
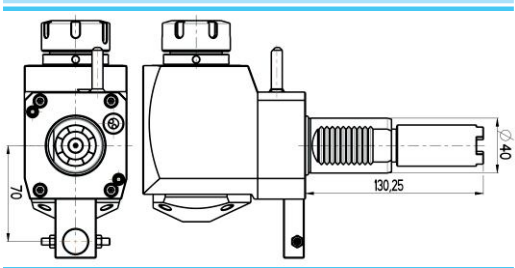


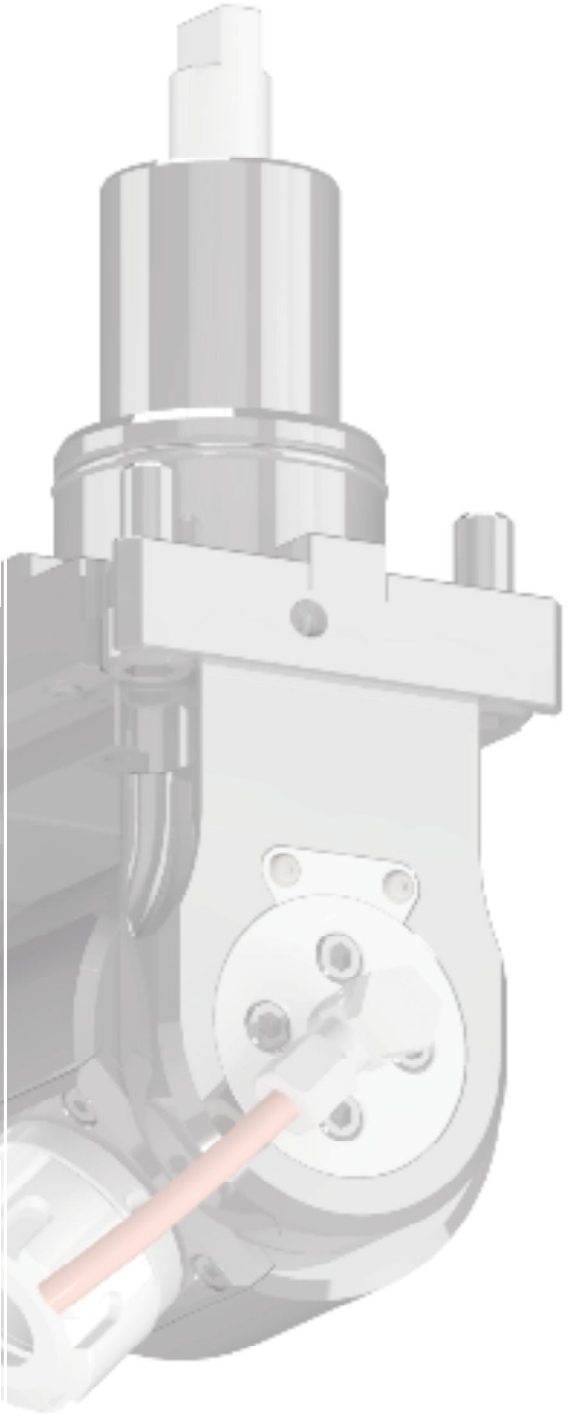
Details code		Technical details		Details code		Technical details	
JB	VDI40 OKUMA			C	VDI30 DIN1809		
JC	VDI40 OKUMA			D	VDI30 DIN1809		
JD	VDI40 OKUMA			S	VDI40 (short)		
JE	VDI40 OKUMA			D	VDI40 TOEM		
B	VDI30 DIN1809			A	VDI40 HAAS		

Details code		Technical details	
(1:2)	Ratio 1:2	$n_1=6000\text{r/min (in)}$ $n_2=12000\text{r/min (out)}$	
(2:1)	Ratio 2:1	$n_2=6000\text{r/min (in)}$ $n_1=3000\text{r/min (out)}$	
JA	VDI30 OKUMA		
JB	VDI30 OKUMA		
JA	VDI40 OKUMA		
JAS	VDI40 OKUMA same direction (in-out)		



Details code	Technical details		Details code	Technical details	
(JA) BMT60 OKUMA			(DO) BMT65 DOOSAN		
(JB) BMT60 OKUMA			(NT) BMT44 NAKAMURA -TOME		
(MS) BMT60 MORI-SEIKI			(NT) BMT55 NAKAMURA TOME		
(DO) BMT45 DOOSAN			(NT) BMT65 NAKAMURA -TOME		
(DO) BMT55 DOOSAN					

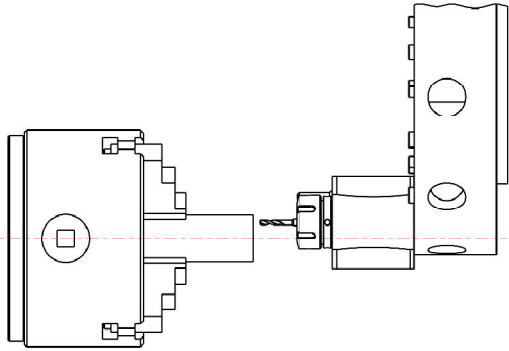
Details code	Technical details	
AS	VDI40 HAAS same direction (in-out)	
B	VDI40 HAAS	
BS	VDI40 HAAS same direction (in-out)	
C	VDI40 HAAS	
CS	VDI40 HAAS same direction (in-out)	



## DIN 5482 Operations with VDI Disk-type turret

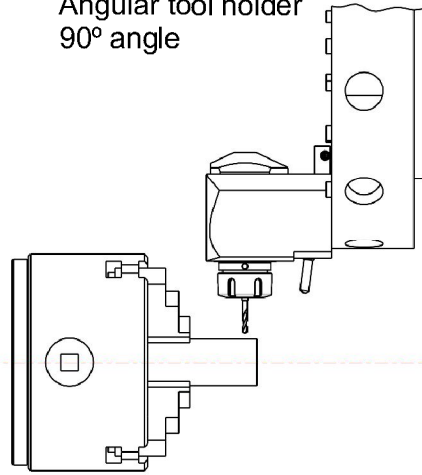
### Axial operation

Straight tool holder

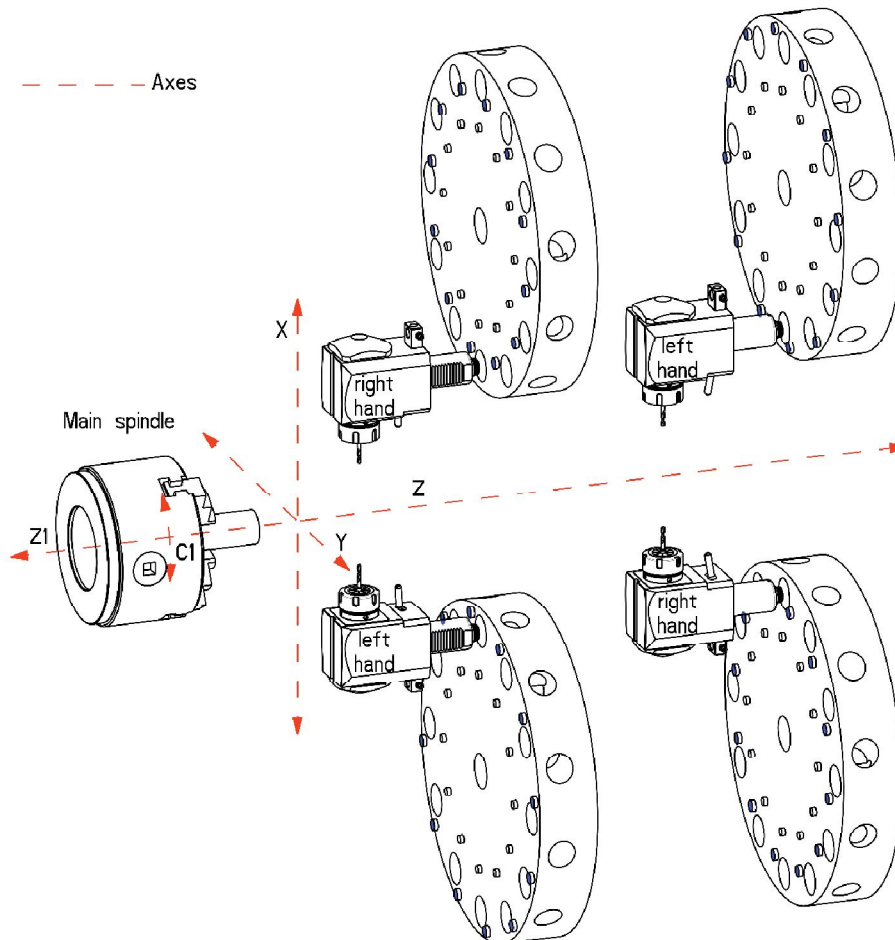


### Radial operation

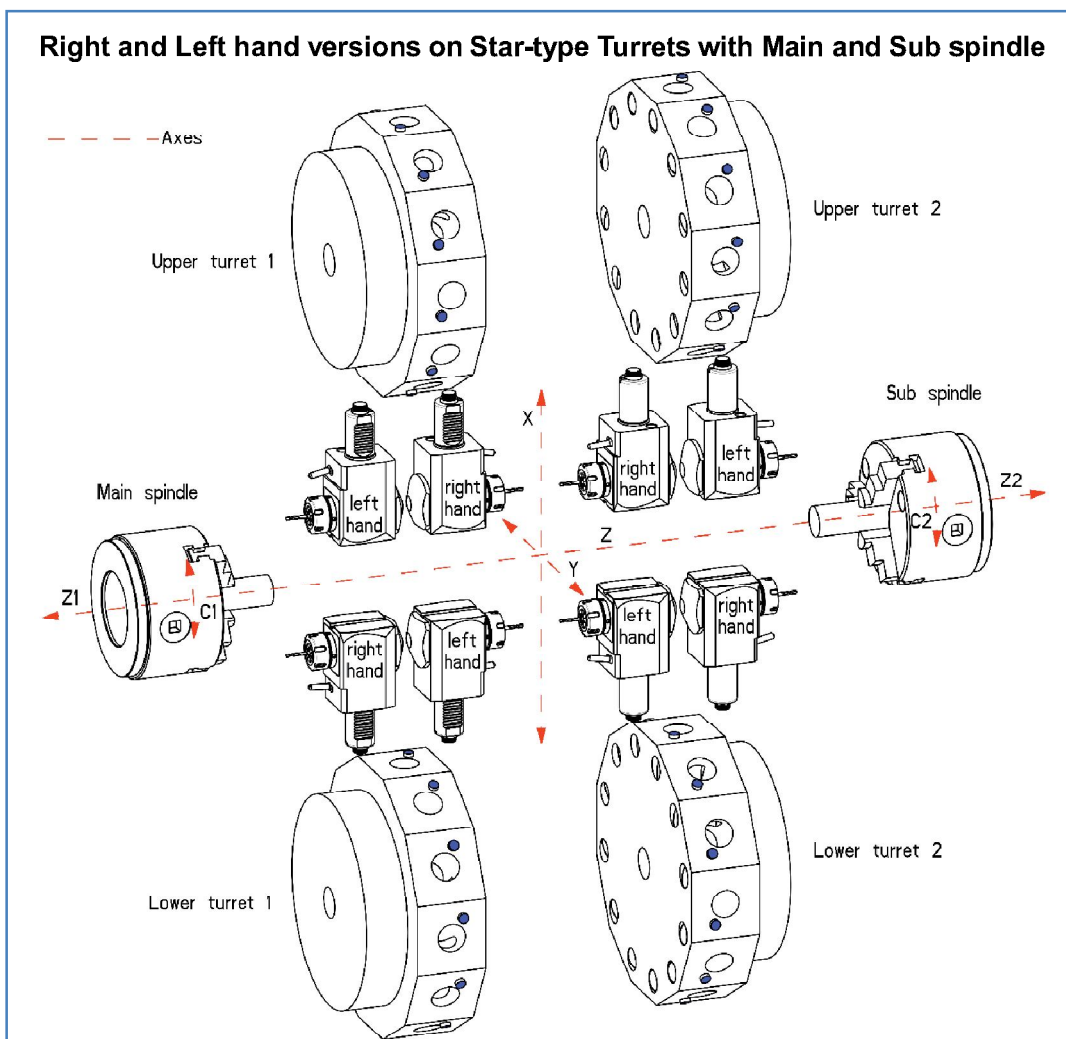
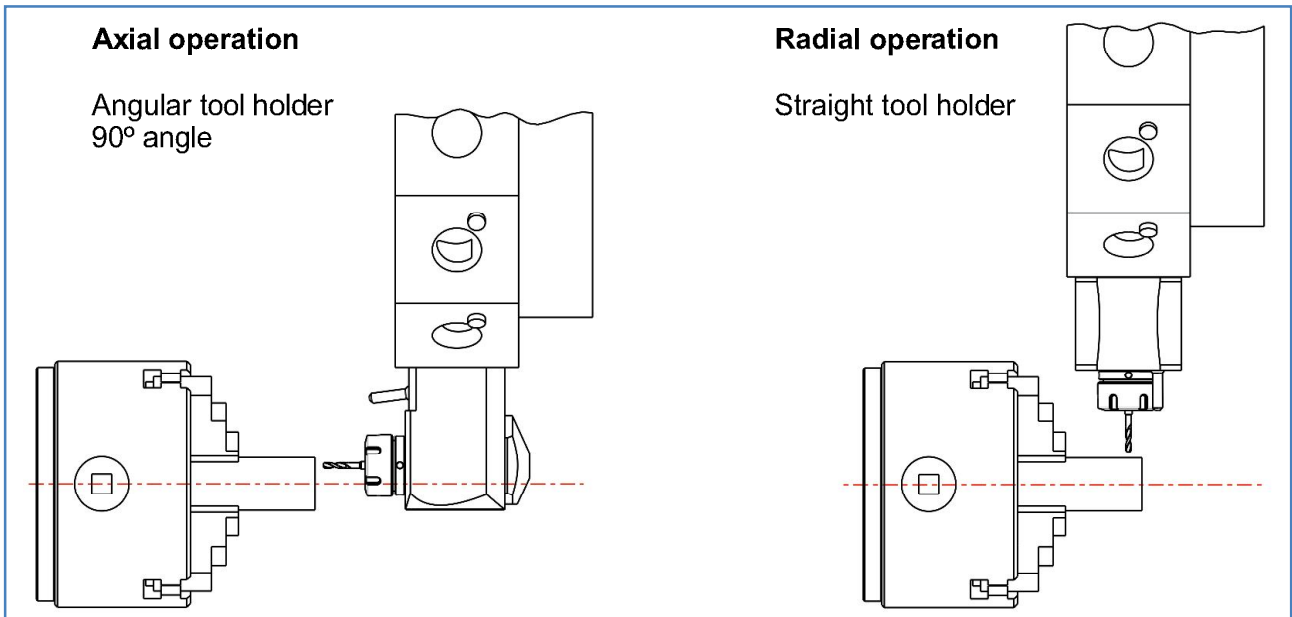
Angular tool holder  
90° angle

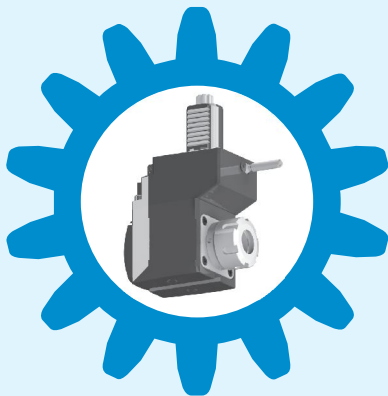
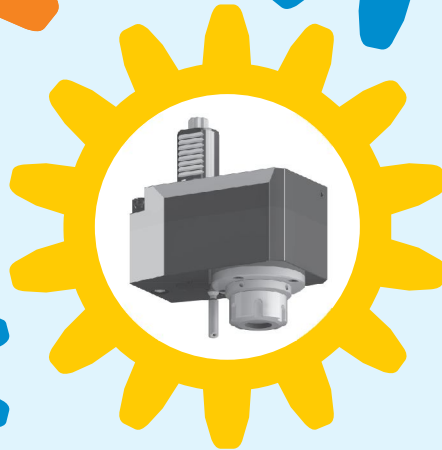
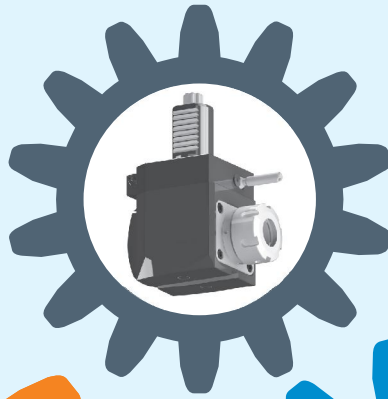


### Right and Left hand versions on Disk-type Turrets



## DIN 5480 Operations with VDI Star-type turret

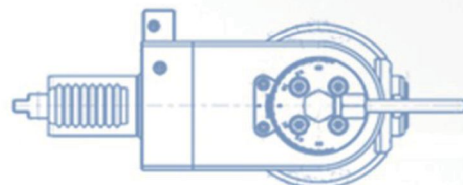
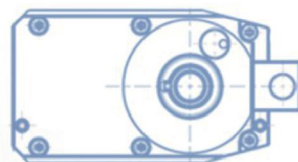
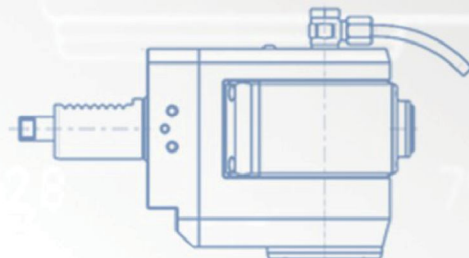
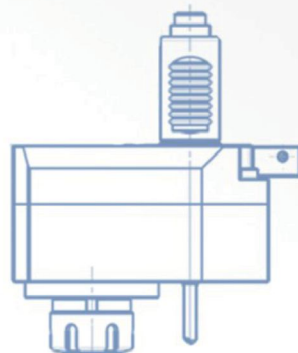
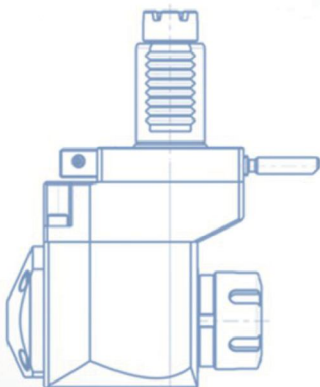
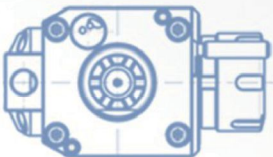
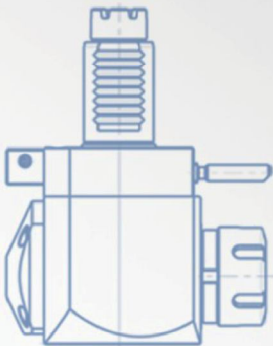




# VDI TURRET TOOLHOLDERS

## Suitable for:

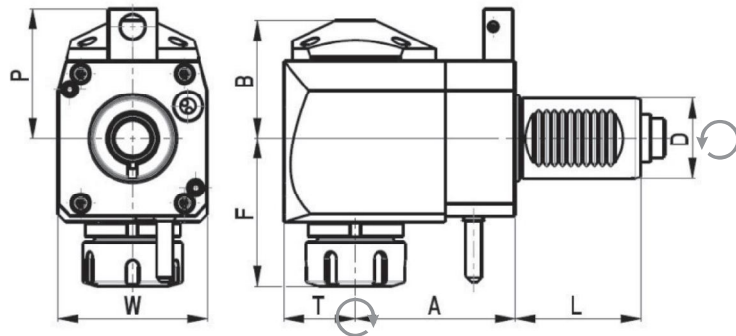
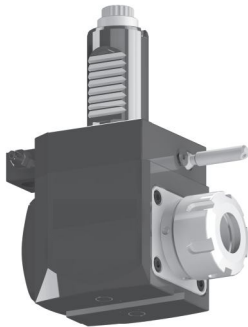
AKIRA SEIKI  
BARUFFALDI / TOEM  
Biglia  
Boehringer  
DOOSAN  
DUPLOMATIC DIN 1809  
EMCO  
Gildemeister/ DMG MORI  
HAAS  
Hardinge  
HURCO  
Hwacheon  
Hyundai WIA  
INDEX  
Jyoti  
Mazak  
Monforts  
Mori Seiki  
NILES  
OKUMA  
SAUTER DIN 5480  
SAUTER DIN 5482  
Schaublin  
Spinner  
Traub  
WFL



## SAUTER TURRET DIN 5480



### Angular drilling and milling head

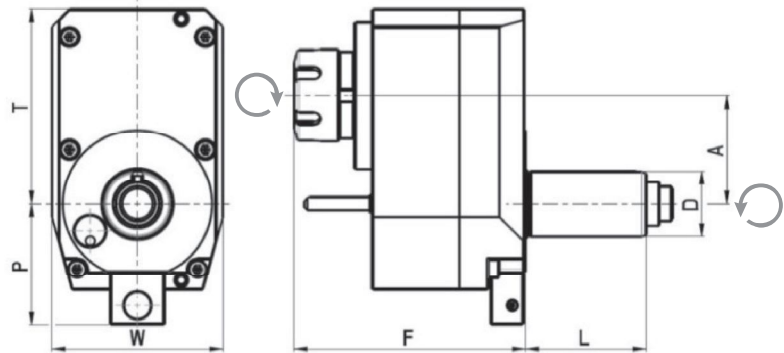
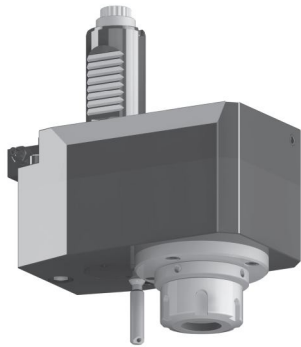


Code	D	Tool grip	I.C.	Direction	A	B	F	L	P	T	W	Torque [Nm]	Speed [rpm]	Ratio	P [bar]
EDL1-30/231-25/1.1-55	30	ER25	no	right	55	48	64	55	56	29	64	28	6000	1:1	-
EDL1-30/231-25/2.1-55	30	ER25	yes	right	55	51	64	55	56	29	64	28	6000	1:1	20
EDL1-30/231-25/1.1-85	30	ER25	no	right	85	48	64	55	56	29	64	28	6000	1:1	-
EDL1-30/231-25/2.1-85	30	ER25	yes	right	85	51	64	55	56	29	64	28	6000	1:1	20
EDL1-30/231-25/1.1-100	30	ER25	no	right	100	48	64	55	56	29	64	28	6000	1:1	-
EDL1-30/231-25/2.1-100	30	ER25	yes	right	100	51	64	55	56	29	64	28	6000	1:1	20
EDL1-30/231-25/2.2-100	30	ER25	yes	left	100	51	64	55	56	29	64	28	6000	1:1	20
EDL1-30/231-25/1.2-100	30	ER25	yes	right	100	48	64	55	56	29	64	28	6000	1:1	-
EDL1-30/231-25/1.2-55	30	ER25	no	left	55	48	64	55	56	29	64	28	6000	1:1	-
EDL1-30/231-25/2.2-55	30	ER25	yes	left	55	51	64	55	56	29	64	28	6000	1:1	20
EDL1-30/231-25/1.2-85	30	ER25	no	left	85	48	64	55	56	29	64	28	6000	1:1	-
EDL1-30/231-25/2.2-85	30	ER25	yes	left	85	51	64	55	56	29	64	28	6000	1:1	20
EDL1-40/231-25/1.1-80	40	ER25	no	right	80	59	70	64	65	36	75	50	6000	1:1	-
EDL1-40/231-25/2.1-80	40	ER25	yes	right	80	62	70	64	65	36	75	50	6000	1:1	20
EDL1-40/231-32/1.1-80	40	ER32	no	right	80	59	74	64	65	36	75	50	6000	1:1	-
EDL1-40/231-32/2.1-80	40	ER32	yes	right	80	62	74	64	65	36	75	50	6000	1:1	20
EDL1-40/231-25/1.1-100	40	ER25	no	right	100	59	70	64	65	36	75	50	6000	1:1	-
EDL1-40/231-25/2.1-100	40	ER25	yes	right	100	62	70	64	65	36	75	50	6000	1:1	20
EDL1-40/231-32/1.1-100	40	ER32	no	right	100	59	74	64	65	36	75	50	6000	1:1	-
EDL1-40/231-32/2.1-100	40	ER32	yes	right	100	62	74	64	65	36	75	50	6000	1:1	20
EDL1-40/231-25/1.2-80	40	ER25	no	left	80	59	70	64	65	36	75	50	6000	1:1	-
EDL1-40/231-25/2.2-80	40	ER25	yes	left	80	62	70	64	65	36	75	50	6000	1:1	20
EDL1-40/231-32/1.2-80	40	ER32	no	left	80	59	74	64	65	36	75	50	6000	1:1	-
EDL1-40/231-32/2.2-80	40	ER32	yes	left	80	62	74	64	65	36	75	50	6000	1:1	20
EDL1-40/231-25/1.2-100	40	ER25	no	left	100	59	70	64	65	36	75	50	6000	1:1	-
EDL1-40/231-25/2.2-100	40	ER25	yes	left	100	62	70	64	65	36	75	50	6000	1:1	20
EDL1-40/231-32/1.2-100	40	ER32	no	left	100	59	74	64	65	36	75	50	6000	1:1	-
EDL1-40/231-32/2.2-100	40	ER32	yes	left	100	62	74	64	65	36	75	50	6000	1:1	20
EDL1-40/233-22/1.1-80	40	shell mill 22	no	right	80	59	79.5	64	65	36	75	50	6000	1:1	-
EDL1-40/233-16/1.1-80	40	shell mill 16	no	right	80	62	76.5	64	65	36	75	50	6000	1:1	-

## SAUTER TURRET DIN 5480

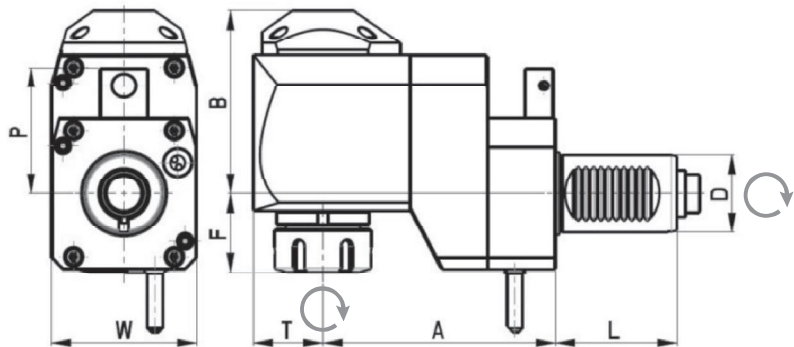
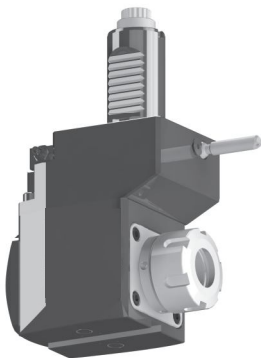


### Offset straight drilling and milling head



Code	D	Tool grip	IC	Direction	A	F	L	P	T	W	Torque [Nm]	Speed [rpm]	Ratio
EDL1-30/331-25/1.1-50(1:2)	30	ER25	no	right	50	106	55	56	90	78	14	12000	1:2
EDL1-30/331-25/1.1-50(2:1)	30	ER25	no	right	50	106	55	56	90	78	40	3000	2:1

### Offset angular drilling and milling head

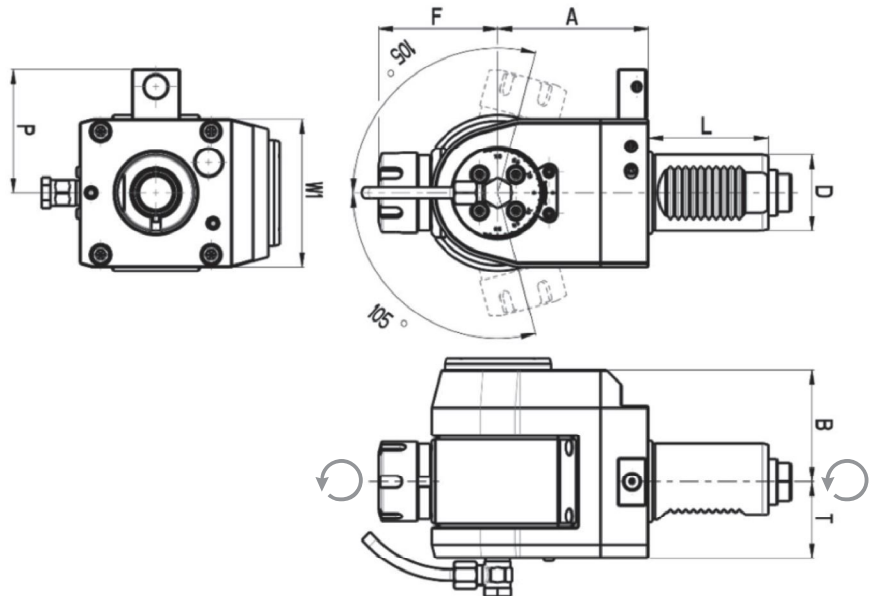
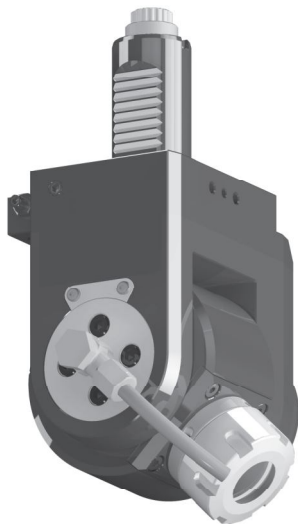


Code	D	Tool grip	IC	Direction	A	B	F	L	P	T	W	Torque [Nm]	Speed [rpm]	Ratio	P [bar]
EDL1-30/431-25/1.1-75	30	ER25	no	right	75	71	40	55	56	29	64	28	6000	1:1	-
EDL1-30/431-25/2.1-75	30	ER25	yes	right	75	74	40	55	56	29	64	28	6000	1:1	20
EDL1-40/431-25/1.1-120	40	ER25	no	right	120	92	37	64	65	36	75	50	6000	1:1	-
EDL1-40/431-25/2.1-120	40	ER25	yes	right	120	95	37	64	65	36	75	50	6000	1:1	20
EDL1-40/431-32/1.1-120	40	ER32	no	right	120	92	41	64	65	36	75	50	6000	1:1	-
EDL1-40/431-32/2.1-120	40	ER32	yes	right	120	95	41	64	65	36	75	50	6000	1:1	20



## SAUTER TURRET DIN 5480

Variable angle drilling and milling head



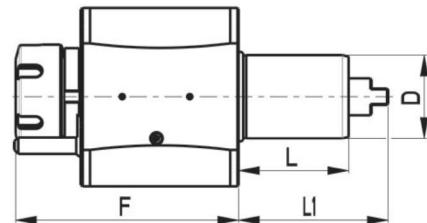
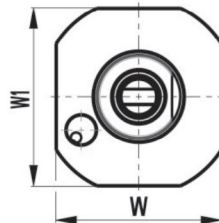
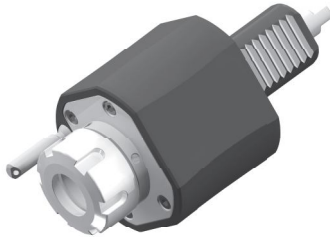
Code	D	Tool grip	Internal Cooling	Direction	A	B	F	L	P	T	W1	Torque [Nm]	Speed [rpm]	Ratio	P [bar]
EDL1-30/531-16/1	30	ER16	no	right/left	79	59	43	55	56	40	64	16	6000	1:1	-
EDL1-30/531-16/2	30	ER16	yes	right/left	86	59	43	55	56	40	64	16	6000	1:1	20
EDL1-30/531-25/1	30	ER25	no	right/left	79	59	43	55	56	40	64	16	6000	1:1	-
EDL1-30/531-25/2	30	ER25	yes	right/left	86	59	43	55	56	40	64	16	6000	1:1	20
EDL1-40/531-25/1	40	ER25	no	right/left	79	59	64	64	65	40	78	16	6000	1:1	-
EDL1-40/531-25/2	40	ER25	yes	right/left	86	59	64	64	65	40	78	16	6000	1:1	20

\* The straight, angular and variable toolholders can be equipped with Weldon shaft or shell-mill shaft upon request.

## DIPLOMATIC TURRET DIN 1809

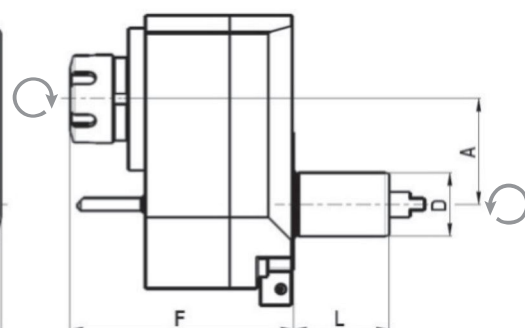
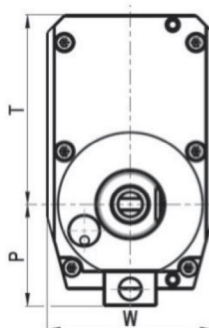
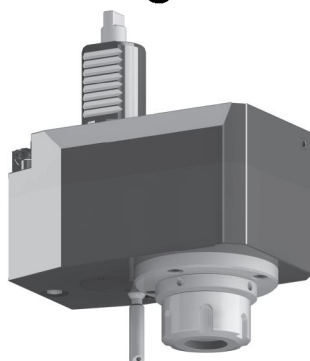


### Straight drilling and milling head



Code	D	Tool grip	IC	F	L	L1	W	W1	Torque [Nm]	Speed [rpm]	Ratio	P [bar]
EDL1-30/121-25/1	30	ER25	no	89	45	62	64	68	28	6000	1:1	-
EDL1-30/121-25/2	30	ER25	yes	89	45	62	64	68	28	6000	1:1	20
EDL1-30/121-25/1B	30	ER25	no	89	55	67	64	68	28	6000	1:1	-
EDL1-30/121-25/2B	30	ER25	yes	89	55	67	64	68	28	6000	1:1	20
EDL1-40/121-25/1	40	ER25	no	105	53	72	80	86	50	6000	1:1	-
EDL1-40/121-25/2	40	ER25	yes	105	53	72	80	86	50	6000	1:1	20
EDL1-40/121-32/1	40	ER32	no	108	53	72	80	86	50	6000	1:1	-
EDL1-40/121-32/2	40	ER32	yes	108	53	72	80	86	50	6000	1:1	20
EDL1-40/121-32/1S	40	ER32	no	95	53	72	80	86	50	6000	1:1	-
EDL1-40/121-32/2S	40	ER32	yes	95	53	72	80	86	50	6000	1:1	20

### Offset straight drilling and milling head

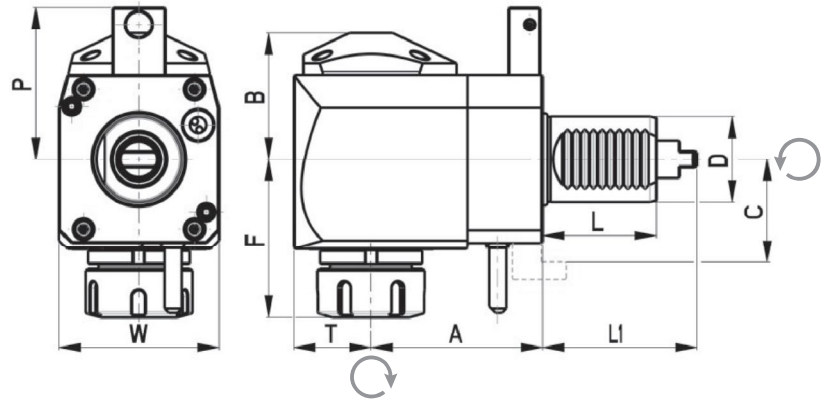
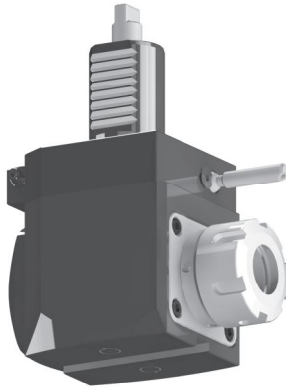


Code	D	Tool grip	IC	Direction	A	F	L	P	T	W	Torque [Nm]	Speed [rpm]	Ratio	P [bar]
EDL1-30/321-25/1.1-50(1:2)	30	ER25	no	right	50	106	45	48	90	78	14	12000	1:2	-
EDL1-30/321-25/1.1-50(2:1)	30	ER25	no	right	50	106	45	48	90	78	40	3000	2:1	-



## DIPLOMATIC TURRET DIN 1809

### Angular drilling and milling head

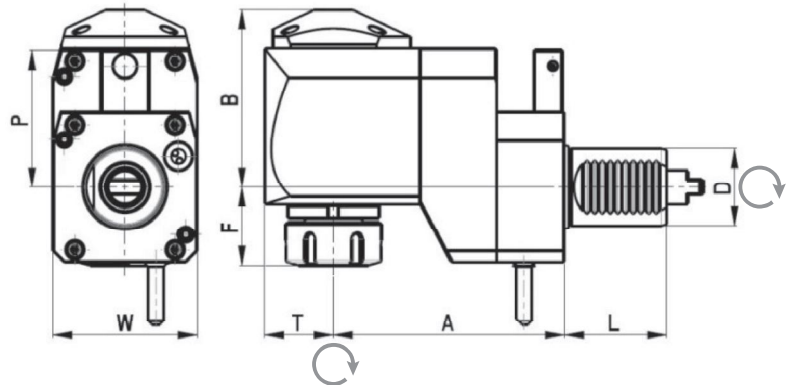
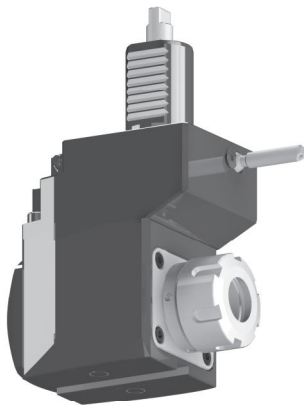


Code	D	Tool grip	IC	Direction	A	B	F	L	L1	P	C	T	W	Torque [Nm]	Speed [rpm]	Ratio	P [bar]
EDL1-30/221-25/1.1-55	30	ER25	no	right	55	48	64	45	62	48	-	29	64	28	6000	1:1	-
EDL1-30/221-25/2.1-55	30	ER25	yes	right	55	51	64	45	62	48	-	29	64	28	6000	1:1	20
EDL1-30/221-25/1.1-55B	30	ER25	no	right	55	48	64	55	67	48	-	29	64	28	6000	1:1	-
EDL1-30/221-25/2.1-55B	30	ER25	yes	right	55	51	64	55	67	48	-	29	64	28	6000	1:1	20
EDL1-30/221-25/1.2-55B	30	ER25	no	left	55	48	64	55	67	48	-	29	64	28	6000	1:1	-
EDL1-30/221-25/2.2-55B	30	ER25	yes	left	55	51	64	55	67	48	-	29	64	28	6000	1:1	20
EDL1-40/221-25/1.1-80	40	ER25	no	right	80	59	72	53	72	71	-	36	75	50	6000	1:1	-
EDL1-40/221-25/2.1-80	40	ER25	yes	right	80	62	72	53	72	71	-	36	75	50	6000	1:1	20
EDL1-40/221-32/1.1-80	40	ER32	no	right	80	59	75	53	72	71	-	36	75	50	6000	1:1	-
EDL1-40/221-32/2.1-80	40	ER32	yes	right	80	62	75	53	72	71	-	36	75	50	6000	1:1	20
EDL1-40/221-25/1.2-80	40	ER25	no	left	80	59	72	53	72	71	-	36	75	50	6000	1:1	-
EDL1-40/221-25/2.2-80	40	ER25	yes	left	80	62	72	53	72	71	-	36	75	50	6000	1:1	20
EDL1-40/221-32/1.2-80	40	ER32	no	left	80	59	75	53	72	71	-	36	75	50	6000	1:1	-
EDL1-40/221-32/2.2-80	40	ER32	yes	left	80	62	75	53	72	71	-	36	75	50	6000	1:1	20
EDL1-40/221-25/1.2-100D	40	ER25	no	left	100	59	72	53	72	-	48	36	75	50	6000	1:1	-
EDL1-40/221-25/2.2-100D	40	ER25	yes	left	100	62	72	53	72	-	48	36	75	50	6000	1:1	20
EDL1-40/221-32/1.2-100D	40	ER32	no	left	100	59	75	53	72	-	48	36	75	50	6000	1:1	-
EDL1-40/221-32/2.2-100D	40	ER32	yes	left	100	62	75	53	72	-	48	36	75	50	6000	1:1	20
EDL1-40/221-25/1.2-100	40	ER25	no	left	100	59	72	53	72	-	48	36	75	50	6000	1:1	-
EDL1-40/221-25/2.2-100	40	ER25	yes	left	100	62	72	53	72	-	48	36	75	50	6000	1:1	20
EDL1-40/221-32/1.2-100	40	ER32	no	left	100	59	75	53	72	-	48	36	75	50	6000	1:1	-
EDL1-40/221-32/2.2-100	40	ER32	yes	left	100	62	75	53	72	-	48	36	75	50	6000	1:1	20



## DIPLOMATIC TURRET DIN 1809

Offset angular drilling and milling head

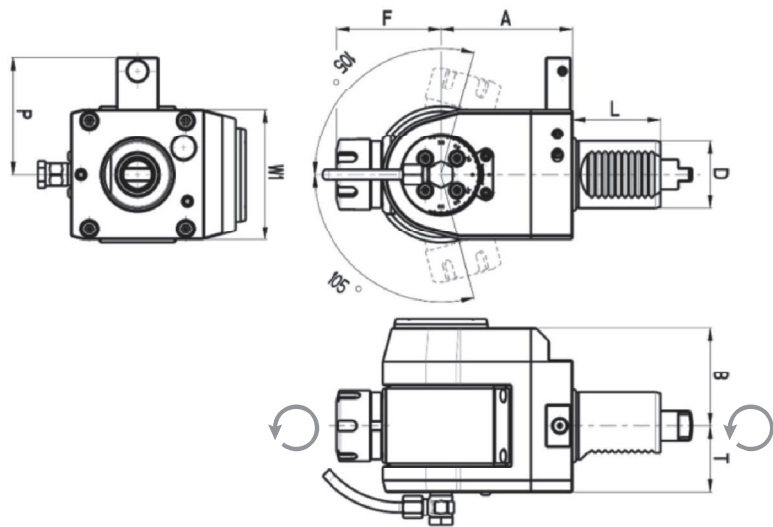
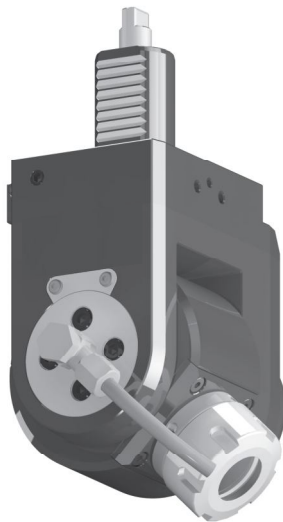


Code	D	Tool grip	IC	Direction	A	B	F	L	P	T	W	Torque [Nm]	Speed [rpm]	Ratio	P [bar]
EDL1-30/421-25/1.1-75	30	ER25	no	right	75	71	40	45	48	29	64	28	6000	1:1	-
EDL1-30/421-25/2.1-75	30	ER25	yes	right	75	74	40	45	48	29	64	28	6000	1:1	20
EDL1-30/421-25/1.2-75B	30	ER25	no	left	75	71	40	45	48	29	64	28	6000	1:1	-
EDL1-30/421-25/2.2-75B	30	ER25	yes	left	75	74	40	45	48	29	64	28	6000	1:1	20
EDL1-40/421-25/1.1-120	40	ER25	no	right	120	92	37	53	71	36	75	50	6000	1:1	-
EDL1-40/421-25/2.1-120	40	ER25	yes	right	120	95	37	53	71	36	75	50	6000	1:1	20
EDL1-40/421-32/1.1-120	40	ER32	no	right	120	92	41	53	71	36	75	50	6000	1:1	-
EDL1-40/421-32/2.1-120	40	ER32	yes	right	120	95	41	53	71	36	75	50	6000	1:1	20



## DIPLOMATIC TURRET DIN 1809

Variable angle drilling and milling head



Code	D	Tool grip	IC	Direction	A	B	F	L	P	T	W1	Torque [Nm]	Speed [rpm]	Ratio	P [bar]
EDL1-30/521-16/1	30	ER16	no	right/left	79	59	43	45	48	40	64	16	6000	1:1	-
EDL1-30/521-16/2	30	ER16	yes	right/left	86	59	43	45	48	40	64	16	6000	1:1	20
EDL1-30/521-25/1	30	ER25	no	right/left	79	59	43	45	48	40	64	16	6000	1:1	-
EDL1-30/521-25/2	30	ER25	yes	right/left	86	59	43	45	48	40	64	16	6000	1:1	20
EDL1-30/521-16/1B	30	ER16	no	right/left	79	59	64	55	48	40	64	16	6000	1:1	-
EDL1-30/521-16/2B	30	ER16	yes	right/left	86	59	64	55	48	40	64	16	6000	1:1	20
EDL1-30/521-25/1B	30	ER25	no	right/left	79	59	64	55	48	40	64	16	6000	1:1	-
EDL1-30/521-25/2B	30	ER25	yes	right/left	86	59	64	55	48	40	64	16	6000	1:1	20
EDL1-40/521-25/1	40	ER25	no	right/left	79	59	64	53	71	40	78	16	6000	1:1	-
EDL1-40/521-25/2	40	ER25	yes	right/left	86	59	64	53	71	40	78	16	6000	1:1	20

\* The straight, angular and variable toolholders can be equipped with Weldon shaft or shell-mill shaft upon request.



# **SAMTEC**

Your Partner For Innovative Tooling Solutions

## **Samtec Tools & Accessories Pvt. Ltd.**

Survey No.33/3, Behind MITCON Institute, Balewadi,  
PUNE-411 045, INDIA

Mobile: +91 9325409714,

Tel No: +91 9175105689, 7507205689

web.: [www.samtectools.com](http://www.samtectools.com)

[ashish@samtectools.com](mailto:ashish@samtectools.com)

[info@samtectools.com](mailto:info@samtectools.com)

Distributed by: